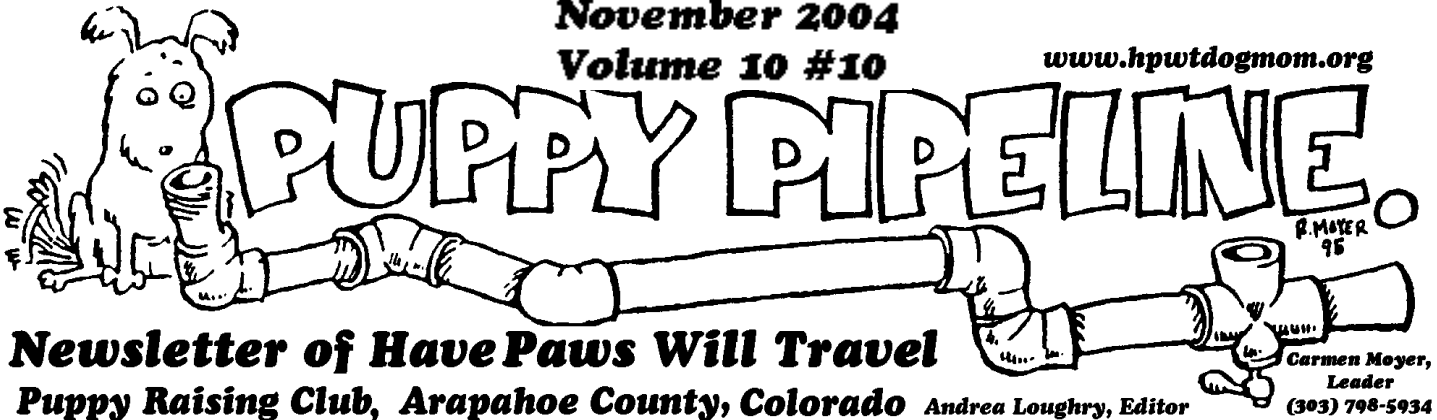


November 2004
Volume 10 #10

www.hpwtadogmom.org



SCHEDULE

PLEASE NOTE: There are several changes in November & December due to building conflicts and holidays. Please mark your calendar accordingly.

November 16th: 7:00 p.m. Training & Business meeting at the County Extension office. Please practice using your longline with your puppy and come with an exercise or experience to share with the group.

November 23rd: 7:00 p.m. Training meeting for extra help. RSVP to Andrea if you plan to attend, with a short description of your puppy's needs.

December 7th: 6:30 p.m. HPWT Holiday Party. Marie Callender's, Dry Creek Road, just west of Broadway, in the back dining room. We will order from the menu, with separate checks. Gift exchange: bring a gift if you want to receive one. RSVP to Carmen by December 1st with the number of people and puppies that will attend. (Puppies are optional.)

December 14th: 7:00 p.m. Training meeting at the County Extension office.

December 28th: 7:00 p.m. Training and business meeting at the County Extension Office.

NEW PUPPY RAISERS

Danny Henderson and family are recently approved puppy raisers, and will receive a puppy next Spring. Keep them in mind if you need puppy sitting! Their contact info will appear on the next roster. Until then, Carmen can put you in touch with them.

NEW PUPPY

SHERWOOD, a male black lab, arrived on the puppy truck on October 28th. He is Andrea Loughry's thirteenth puppy to raise. Welcome, SHERWOOD!



SWEATSHIRT ORDERS

Deadline for ordering green puppy raiser style sweatshirts is November 6th. If you want one before 2005 please call Pam Kalkus.

PUPPY KISSES

🐾 To Andrea Loughry & EMMETT for setting up an informational booth during the hot dog dinner that followed the Blessing of the Animals at Our Father Lutheran Church on October 9th.

🐾 Sloppy kisses from Jane Smoak to Jane Ritter with MULDER, Carmen Moyer, Janet Ford and BAYLA, and to Lynda Harris for sending AKIRA to a spur-of-the-moment fund raiser for Denver Eye-Paws on October 23rd.

🐾 To Carmen Moyer & LODGE and Andrea Loughry & SHERWOOD for doing an educational program at the Ricks Center at DU for about 34 kindergarteners on November 1st.

🐾 To all the raisers who made a special effort to attend our off-schedule meeting on November 2nd. We had a wonderful turnout for Barb Deevers' training session on longlines and double-leashing techniques. Sloppy kisses to Barb for the great demonstration!



ASK ABBIE



Abolene is a career change golden and co-raiser of twelve puppies. Address questions to Abbie at abbie@hpwtdogmom.org

Dear Abbie:

I love water. I love it so much, I dump my water bowl so I can splash around in it! The bowl makes such a lovely clanging sound. I love to slide it around with my nose and bat it with my paws like a hockey puck. My food bowl is fun to play with, too. My mom thinks it's cute when I play with my food bowl, but she hollers at me for spilling the water. I don't see the difference. Do you?

—Playing Floor Hockey

Dear Hockey:

No, I don't see the difference between your water and food bowl: you should not be playing hockey with either of them! No doubt your mom objects to you dumping the water bowl because it makes a huge mess. Your food bowl doesn't make a mess when it's empty, but you must not play with it, either. Think of it from your future partner's perspective: if you play with your food bowl and move it around the room, how will the blind person ever find it next time they need to feed you? As for dumping the water bowl, *don't!* A wet mess is destructive to floors and carpets, difficult for a blind person to clean up, and downright dangerous if it makes the floor slippery where a blind person can't see it. Tell your mom to teach you to stop playing with your bowls. She will probably need to keep you on a leash for a while and set you up for corrections to help remind you of your manners. Tell her to make sure you have access to fun, approved toys you can play with instead. And remind her to put your food bowl away after you've eaten so you aren't tempted to play hockey when she's not supervising you closely. Better to break the floor hockey habit now, before it makes a problem for your blind partner!

THANK YOU NOTES

Thank-you notes for the latest donation of Purina Proplan can be addressed to:

Louis Thomas, Plant Manager
Nestle Purina PetCare Company
4555 York Street
Denver, CO 80216

FANGS AND HAIRY HUGS...



We had at least 99 people and 43 dogs in attendance at the Halloween party. *Owooo!* View this year's bash, as well as past Halloween parties on our website at http://hpwtdogmom.org/club/events/halloween_2004.html.



To HPWT's Wendy Kalkus, who designed the werewolf invitation.



To room decorators Randi Peet, who put together the haunted house stage set; and Danny Henderson for bringing straw for the photo corner and putting up the rest of the decorations; and to Pam Kalkus who was everywhere at once getting things just right!



To the McPartlands of *Dogs with Vision* who organized and announced the costume contest in true wolfy style.



To the Wristons and *Liberty on Leashes* for running a very smooth and thorough registration table complete with festive name tags.



To all clubs for bringing a delicious selection of food items.



To each club for collecting prizes throughout the year in anticipation of donating them to the party.



To Dot Dill, Danny Henderson, Carmen Moyer and the Smoak Family for staying after the party to help Pam Kalkus and family clean up!



To the guest of honor, Lisa Taylor, our new 4-H Guide Dog project representative. Thank you for coming to be with us!



To our fabulous judges from the Animal E.R., Megan Ellis and Julie Landon.



To Andrea Loughry for taking lots of pictures and putting them up on the web.

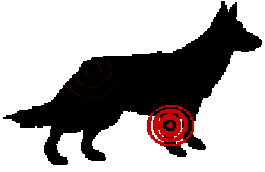


AND...a huge howl to all of you who put together those awesome costumes. *That* is what makes the party work.



Extra sharp fangs & shaggy hugs to Pam Kalkus for donating the haunted house set; and the paperware and coordinating everything for the best Halloween Howl ever!

MALADY OF THE MONTH



Panosteitis: “Pano” is a disease of large, rapidly growing puppies between five and twelve months of age. The cause is unknown, but males are affected four times as often as females. Symptoms include intermittent lameness in one or more legs that is unrelated to trauma. A characteristic sign is pain and lameness that shifts from one limb to another over the course of several weeks or months. X-rays show increased density in a long bone. Lameness may persist for several months, but symptoms usually disappear by the time the dog is twenty months old.

What you can do: If your dog appears lame, but has not hurt himself recently, discuss the need for a vet visit with your leader. If your vet recommends X-rays to confirm pano and rule out osteochondrosis, elbow dysplasia or hip dysplasia, contact Guide Dogs for authorization of the procedure and pre-approval of the expense. The veterinarian can prescribe pain medication to relieve symptoms, and crate rest is recommended until the condition resolves on its own.

Information from: *Dog Owner's Home Veterinary Handbook*, 3rd ed. By James M. Giffin, MD & Liisa D. Carlson, DVM. New York: Howell Books, 2000.

DUFFEL VS. PLASTIC

All HPWT raisers have gorgeous and secure duffel bags to use when our dogs go visiting. But many raisers just use a plastic grocery bag for the dog's equipment—especially if the dog is only staying for a day or two. It may seem that your pup's stay isn't long enough to justify such a big bag. Or maybe the duffel is in the car instead being used for visiting. The problem with using a plastic bag is that the dog can easily get into it, spill things, or eat things. With a plastic bag, equipment can get lost just by plopping out of the opening. A bag with a zipper is more secure. The blue HPWT bags look professional and send a great message. The sitter can leave everything in this bag (in a safe place) until the items are needed. The bags are a very tidy way of not losing things or sending a puppy home without a piece of equipment! Let's use 'em!

HAPPY HOLIDAYS

by Jane Smoak

The end of the year is a time of family gatherings, rich food, decorating and general hubbub. Whatever your holiday traditions, this can be a challenging time for your puppy. Shopping areas are more crowded and noisier. Homes are decorated for the season. There is lots of cooking going on, and holiday festivities to attend.

At this hectic time of year, be especially careful about preventing problems with your pup. Try to go shopping during a less busy time at the mall unless your pup is a seasoned pro. Even then, be watchful for signs of stress and limit time in crowds. Be mindful that streets and sidewalks may be covered in de-icing compounds which need to be washed from your pup's feet as soon as possible so he doesn't lick it off and get sick.

Puppy-proof your decorations. An intact male may want to tell the world that your Christmas tree belongs to him. Other pups may want to play with or taste decorations that are swinging from the branches. Consider putting an ex-pen around a tree or being absolutely diligent in preventing your pup from exploring the area. When the pup does have access to decorations, supervise him closely and correct problems—even if he has had “perfect” house manners in the past. Poinsettias and other holiday greenery cause intense irritation and need to be kept away from pups completely.

Chocolate is a common treat this time of year. It is not only the candy that is a problem but also the wrapping around it. Dogs want to get to the sweet stuff and are just as happy to eat the gold foil around a chocolate coin as not. Don't let them!

If you must leave your puppy home from many holiday excursions, she may not get enough exercise. Even if the dog does go with you to the mall and music program, be sure she gets to run and play enough to get the wiggles out and blow off the stress of the day. Don't forget your regular grooming and training sessions. Pups look forward to this one-on-one time.

Our pups need to learn about this busy time of year. Introduce them to it in a way that will be fun as well as safe. If you can't directly supervise your puppy, remember, you can still give him some quiet kennel time. With prior planning, you and your pup can have Happy Holidays.

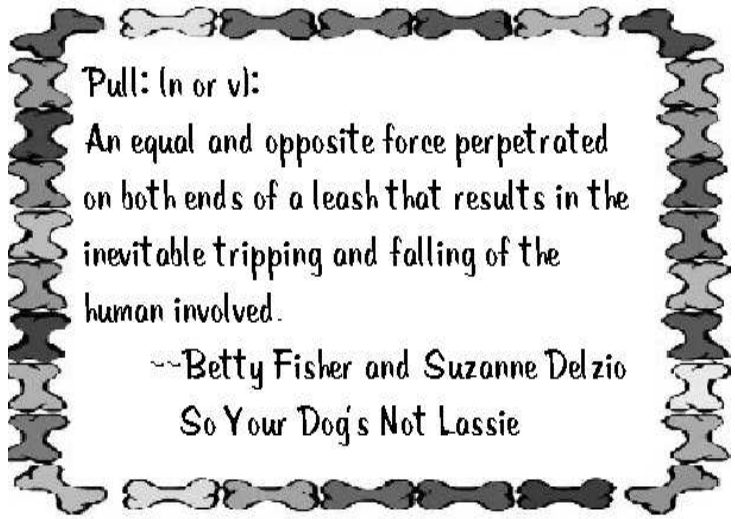


REMINDERS

Attendance at our training meetings is important both for our raisers and puppies. Raisers learn training techniques, ask questions, and have the support of fellow raisers. Puppies get experience concentrating on their lessons in the presence of other dogs. Business meetings are your chance to help make club decisions. If you must miss a meeting, please be sure to call or email Carmen for an excused absence. If at all possible, make arrangements for your pup to attend with another family. It will give him a chance to learn how to work with other raisers—sort of a mini-trade! Lastly, keep in mind we do take attendance, even though we don't do a roll call; we need to account for everyone and their dogs.



When your puppy is between 16 and 20 weeks of age, gradually switch her from three meals to two meals a day. Increase the amount she gets at breakfast and dinner and decrease her lunch. Growing puppies may need their portion size adjusted frequently to reflect their growth rate and exercise. If your puppy starts looking thin, it's time to up his food by a half cup or so. If he starts looking pudgy, slows down eating or doesn't finish his meal within fifteen minutes, or if you notice he is putting out a lot more stool than in the past, it may be time to hold the portion steady or even cut back slightly until he starts growing again. A puppy at ideal weight has a slight waistline behind the ribs when viewed from above, and a slight tuck in his abdomen just where it meets his back legs. If you are unsure about your pup's weight, have a leader check it with you at a club meeting.

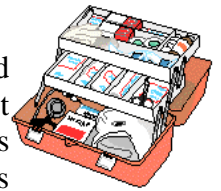


Pull: (n or v):

An equal and opposite force perpetrated on both ends of a leash that results in the inevitable tripping and falling of the human involved.

--Betty Fisher and Suzanne Delzio
So Your Dog's Not Lassie

FIRST AID KITS



All HPWT members have received professionally prepared canine First Aid kits. Review the contents occasionally so you know what is included, how to use it, and where the kit is, in case you need it in a hurry. Feel free to add items, such as leftover ear cleaner or Neosporin ointment. One of the included items, Kwick Stop, will come in handy on a regular basis when you trim your pup's toenails! Please remember to store your kit away from extreme temperatures, in a place you can get to it easily in case you need it in an emergency.

THIRTEEN WAYS TO RE-USE DOG FOOD JUGS

From Lynda Harris

We all have lots of large black plastic jugs from the recent Purina food donations. What a shame to waste them! Here are some ideas to put them to good use when the dog food is gone. Or think of your own!

1. It's a GDB approved toy! Peel off the label and make sure your pup only uses it for pushing or carrying around, not for chewing.
2. Put food in it and send it along with Puppy when he goes to the puppy sitter.
3. Put water in it and stick it in the trunk of your car or the back of your SUV as an emergency supply for Puppy or for your car.
4. Keep one at work, or any other place that you might have your puppy at mealtime.
5. Fill it back up from a large, economy size bag of dog food.
6. Cut off the top, keeping the handle intact. Use it for a messy, one-time use, like mixing paint or cement or patching plaster.
7. Use for storing stuff in the garage or basement.
8. Turn it into a planter.
9. Use it to bail water out of your boat.
10. Donate them to a preschool or kindergarten class for craft time.
11. Use it to store bird food for refilling the feeder for our winter friends.
12. It would make a nifty storage bin for Legos, Lincoln logs, or other toys that have a million pieces.
13. Put it out with your other recyclables for curbside pickup. (Don't have curbside recycling where you live? Bring it to a club meeting and give it to someone who does!)